

Connecting to Claremont-WPA

While on the Claremont Colleges campuses you may connect to the wireless network with your Scripps College network username and password. New students, staff or faculty connect to Claremont-WPA only after changing their password.

Windows 10:

1

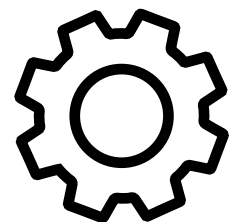
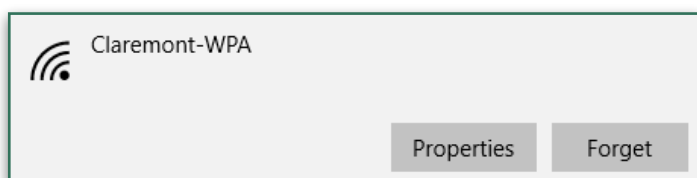
Restart the Device

2

Start menu > Settings > Network and Internet > WiFi > Manage known networks

3

Select Claremont-WPA from Network Connections in the System Tray and click Forget



4

Settings > Network and Internet > Network Sharing Center > Setup a connection or network

5

Select Manually connect to a wireless network

6

Enter information for Claremont-WPA. In field Network name enter Claremont-WPA and for Security type select WPA2-Enterprise and click

Manually connect to a wireless network

Enter information for the wireless network you want to add

Network name:

Security type:

Encryption type:

Security Key: Hide characters

Start this connection automatically

Connect even if the network is not broadcasting

Warning: If you select this option, your computer's privacy might be at risk.

7

Select Change connection settings

8

Select Security (tab) > Settings > Uncheck Verify the Server's Identity and Select Configure

Protected EAP Properties

When connecting:

Verify the server's identity by validating the certificate

Connect to these servers (examples: srv1;srv2;.*\,srv3\,com):

Trusted Root Certification Authorities:

- AddTrust External CA Root
- AffirmTrust Commercial
- Baltimore CyberTrust Root
- Class 3 Public Primary Certification Authority
- DigiCert Assured ID Root CA
- DigiCert Global Root CA
- DigiCert High Assurance EV Root CA

Notifications before connecting:

Select Authentication Method:

Enable Fast Reconnect

Disconnect if server does not present cryptobinding TLV

Enable Identity Privacy

9

Uncheck Automatically use my Windows logon name and password (and domain if any). Click OK > OK > Close

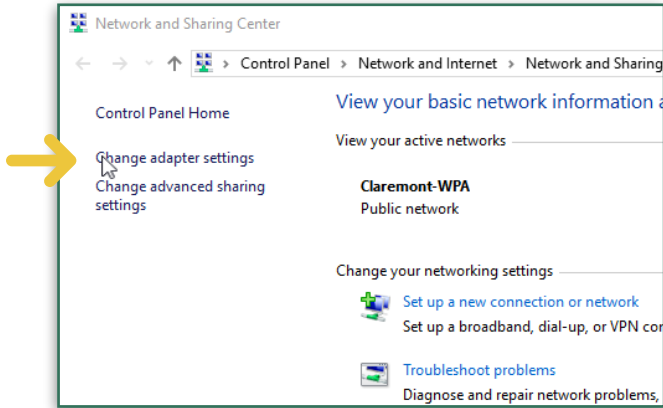
EAP MSCHAPv2 Properties

When connecting:

Automatically use my Windows logon name and password (and domain if any).

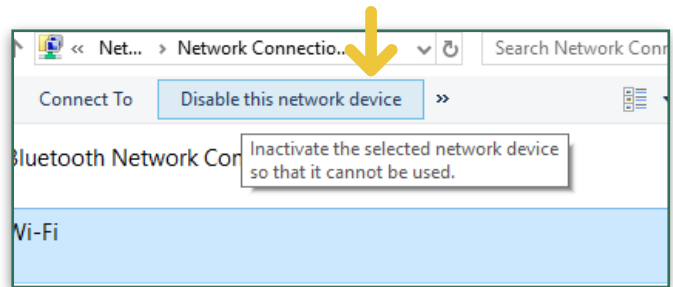
10

From Network and Sharing Center > Change Adapter settings



11

Select Wi-Fi and the option to Disable this network device will appear, Select that option



12

Wait 5 seconds before selecting Enable this network device

13

From the Task Bar Select WiFi

14

Select Claremont-WPA > Connect



15

After several seconds a Windows Security dialogue box will pop up. Enter your network username@scrippscollege.edu and password Your device will now connect to Claremont -WPA

